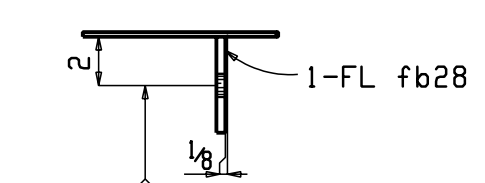
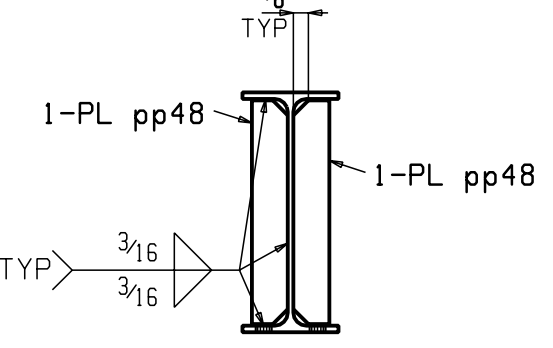


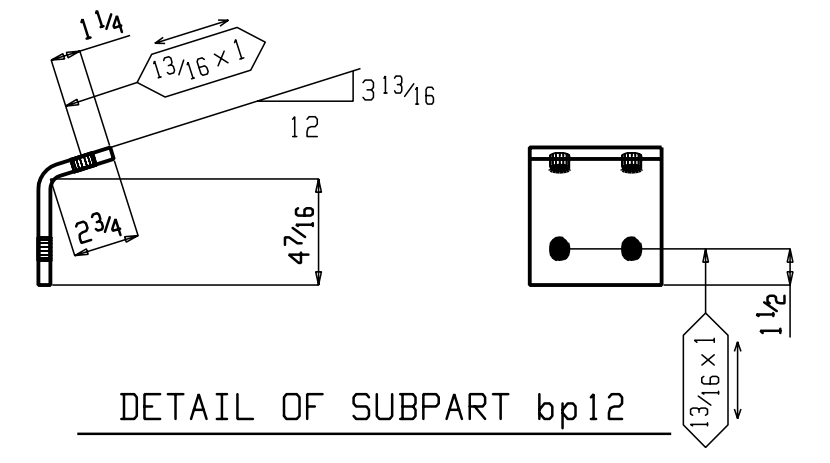
ONE BEAM B425
 W 9 7/8 x 3 1/8
 F 3 15/16 x 3 1/8



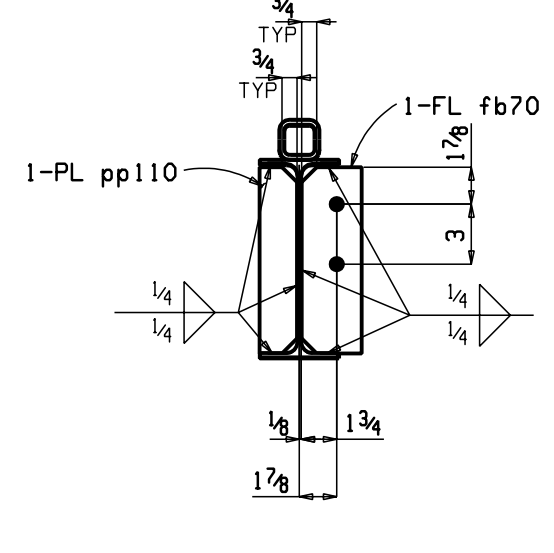
Section B-B
A425



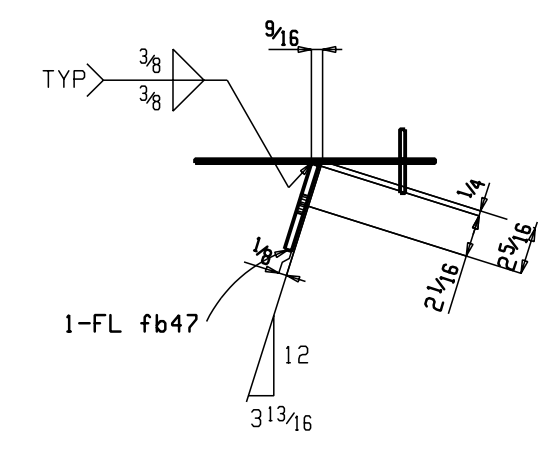
Section A-A
A425



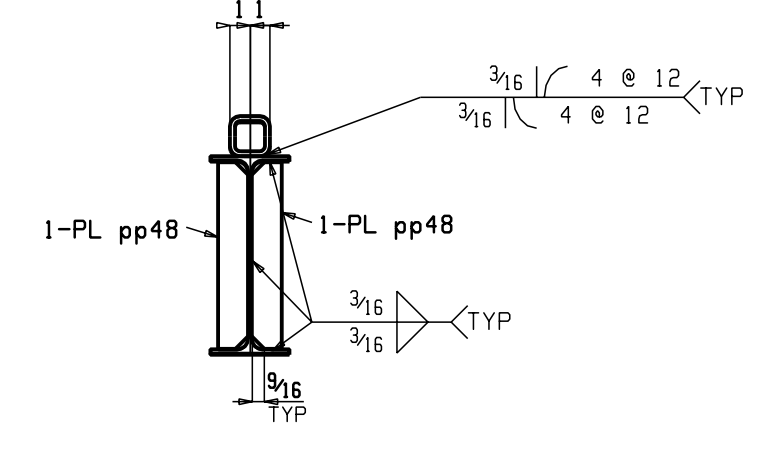
DETAIL OF SUBPART bp12



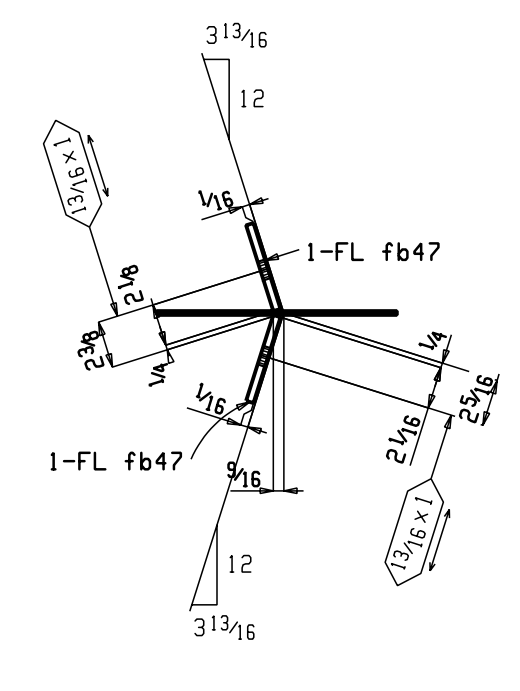
Section A-A
B425



Section B-B
B425



Section C-C
B425



Section E-E
B425

NOTE: FINAL FOR FAB & CONSTRUCTION

BILL OF MATERIAL						
Piece Mark	Quantity	Description	Length	Steel Grade	Remarks	Sequence Numbers
A425	ONE	BEAM				4 1
A425	1	W10x12	19	A992	BIE	
bp12	1	BPL 1/2x1 1/4	0	A36	BENT	
fb28	1	FL 3/8x4	0	A36		
pp48	2	PL 1/4x1 1/2	0	A36		
	2	TC 3/8 Dia A325N	0		IHD WASH	
B425	ONE	BEAM				4 1
B425	1	W10x12	30	A992	BIE	
ts204	1	TS 1/2x2 1/2x1 1/4	10	A500B		
ts84	1	TS 1/2x2 1/2x1 1/4	6	A500B		
ts203	1	TS 1/2x2 1/2x1 1/4	5	A500B		
fb47	3	FL 3/8x6	0	A36		
fb70	1	FL 3/8x3	0	A36		
pp110	1	PL 3/8x1 1/8	0	A36		
pp48	4	PL 1/4x1 1/2	0	A36		

MATERIAL	ASTM A36 U.O.N.	Holes	13/16
WELDING ELECTRODE:	E70XX	U.O.N.	
SURFACE PREP	SSPC-SP3		
SHOP FINISH	HSC 24 SERIES RED PRIMER		

SUBJECT	SEQ. 04 BEAMS						
PROJECT							
LOCATION	KANSAS CITY, MD.						
CUSTOMER							
DESIGNED BY							
DESIGN/ERECTION DWG REF	E12/S4						
DRAWN BY	TRJ	DATE	6-10-05	CHECKED BY	JFS	DATE	6-30-05
Sheet No.	425	Sale No.	0516				

DATE	REV	DESCRIPTION