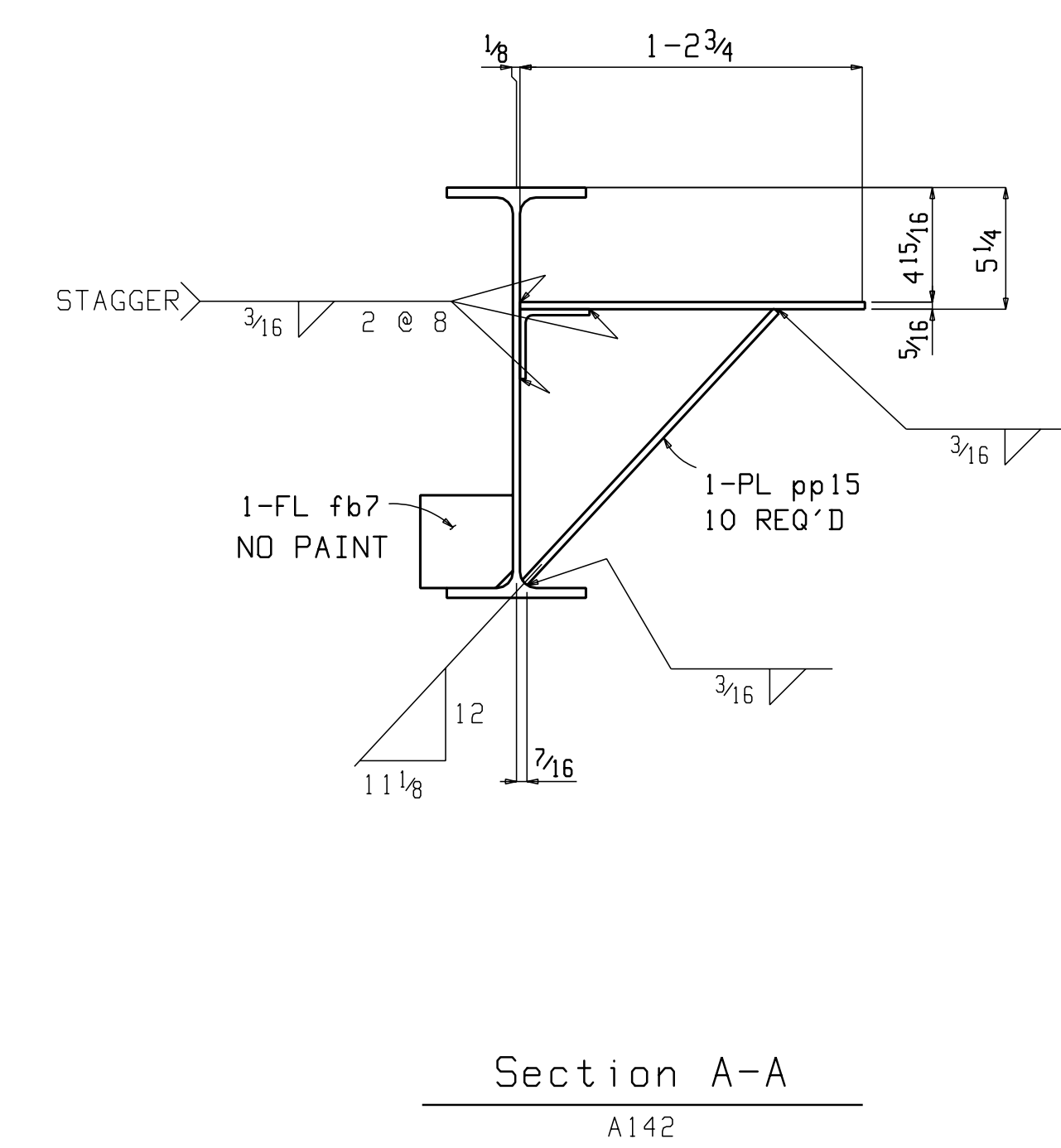
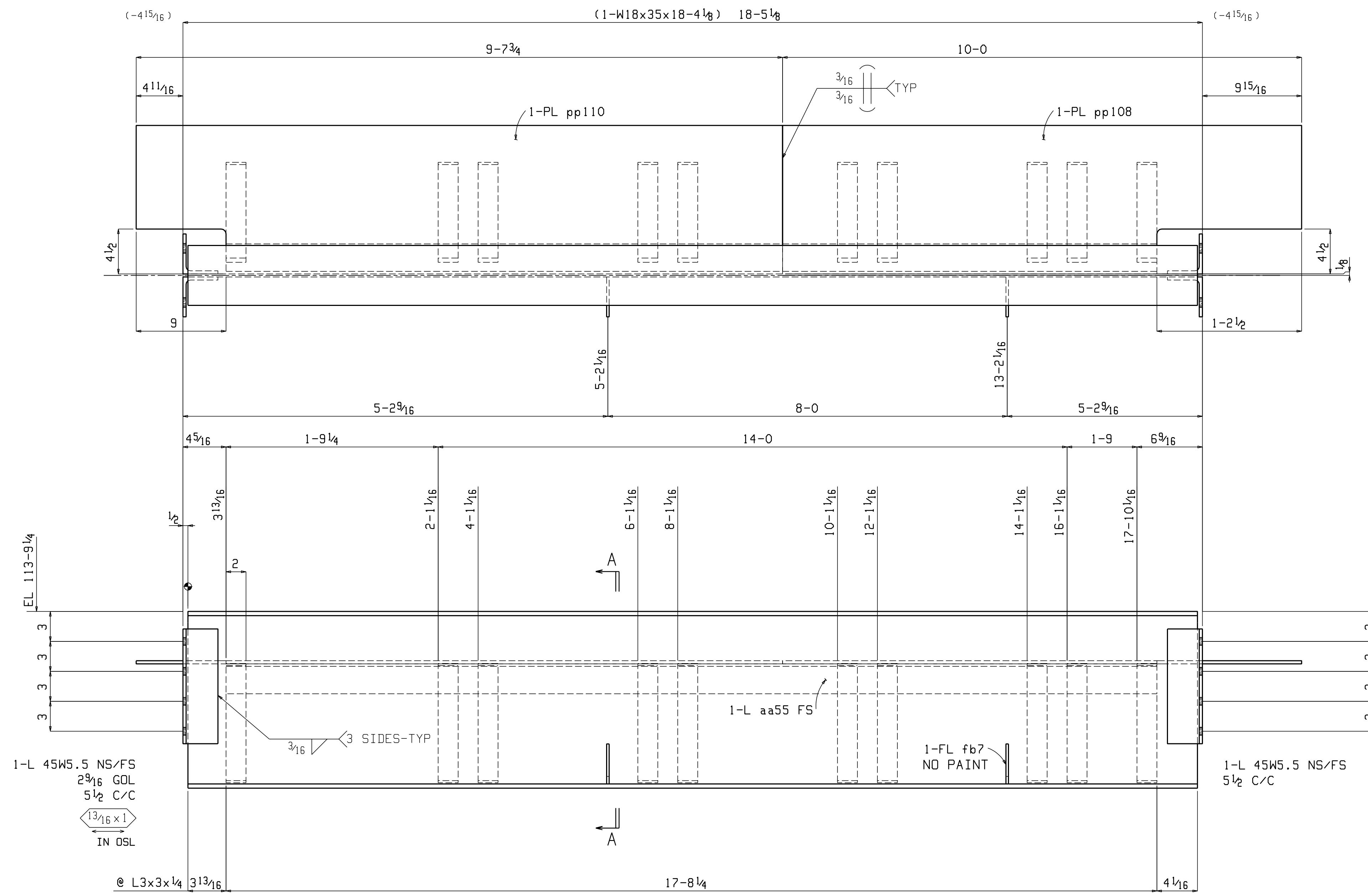


BILL OF MATERIAL

Piece Mark	Quantity	Description	Length	Steel Grade	Remarks	Sequence Numbers	Quantity
A142	ONE	BEAM				2	1
uu20	1	W18x35	18	41/8	A992		
45W5.5	4	L4x3 1/2 x 3/8	0	11/8	A36		
aa55	1	L3x3x1/4	17	81/4	A36		
pp108	1	PL 5/16 x 14 1/2	10	0	A36		
pp110	1	PL 5/16 x 14 1/2	9	7 3/4	A36		
pp15	10	PL 5/16 x 2	1	4	A36		
fb7	2	FL 1/2 x 4	0	4	A36		
		FIELD BOLTS					
	16	TC 3/4 Dia A325N	0	2	1HD WASH		



ONE BEAM A142

W 12 11/16 x 3 3/16  
F 6 x 7/16

NOTE: FINAL FOR FAB & CONSTRUCTION

SHOP PLACE PIECE MARK ON LEFT HAND END OF MEMBER. ERECT MEMBER WITH PIECE MARK TO END SHOWN ON PLACEMENT PLAN

DATE	REV	DESCRIPTION
11-04-05	1	REV PER CHK & APPR

MATERIAL	ASTM A36 U.O.N.	HOLES	13/16
SURFACE PREP	SSPC-SP-3		
SHOP FINISH	STANDARD RED SHOP PRIMER 1.5 MIL.		
SUBJECT	SEQ. 02 BEAM		
PROJECT			
LOCATION	JACKSONVILLE, ILLINOIS		
CUSTOMER			
DESIGNED BY			
DESIGN/ERECTION DWG REF			
DRAWN BY	DATE	CHECKED BY	DATE
WJS/TRJ	10-10-05	JFS	11-2-05
Job No.	1631	Sheet No.	142