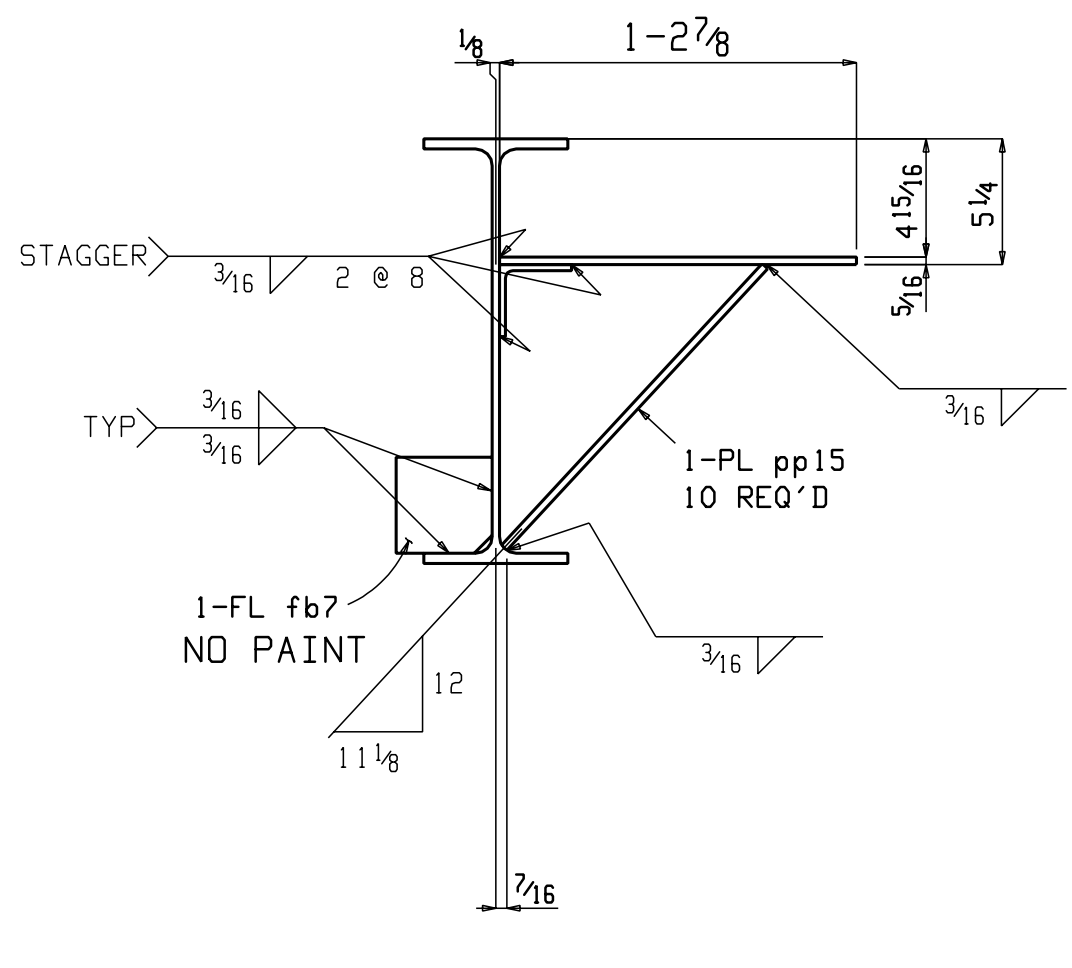


BILL OF MATERIAL

Mark	Quantity	Description	Length	Steel Grade	Remarks	Sequence Numbers	Sequence Quantity
A147	ONE	BEAM				2	1
uu2	1	W18x35	18	A992			
aa3	4	L4x3 1/2 x 3/8	0	A36			
aa8	4	L4x3 1/2 x 3/8	0	A36			
aa42	1	L3x3x 1/4	8	A36			
aa41	1	L3x3x 1/4	8	A36			
aa40	1	L3x3x 1/4	0	A36			
pp43	2	PL 1/2 x 14 7/8	1	A36			
pp66	1	PL 1/2 x 14 7/8	2	A36			
pp113	1	PL 3/8 x 14 7/8	10	A36			
pp115	1	PL 3/8 x 14 7/8	9	A36			
pp99	3	PL 5/16 x 3	1	A36			
pp116	1	PL 5/16 x 2 3/4	1	A36			
pp15	10	FL 5/16 x 2	1	A36			
fb7	2	FL 1/4 x 4	0	A36			
		FIELD BOLTS					
	28	TC 3/4 Dia A325N	0		IHD WASH		



ONE BEAM A147
W 17 1/16 x 5/16
F 16 x 7/16

NOTE: FINAL FOR FAB & CONSTRUCTION

SHOP PLACE PIECE MARK ON LEFT HAND END OF MEMBER. ERECT MEMBER WITH PIECE MARK TO END SHOWN ON PLACEMENT PLAN

DATE	REV	DESCRIPTION
	1	REV PER CHK & APPR
11-04-05		

MATERIAL	ASTM A36 U.O.N.	HOLES	13/16 U.O.N.
SURFACE PREP	SSPC-SP-3		
SHOP FINISH	STANDARD RED SHOP PRIMER 1.5 MIL.		
SUBJECT	SEQ. 02 BEAM		
PROJECT			
LOCATION	JACKSONVILLE, ILLINOIS		
CUSTOMER			
DESIGNED BY			
DESIGN/ERECTION DWG REF	S6/E2		
DRAWN BY	DATE	CHECKED BY	DATE
WJS/TRJ	10-10-05	JFS	11-2-05
Job No.	1631	Sheet No.	147