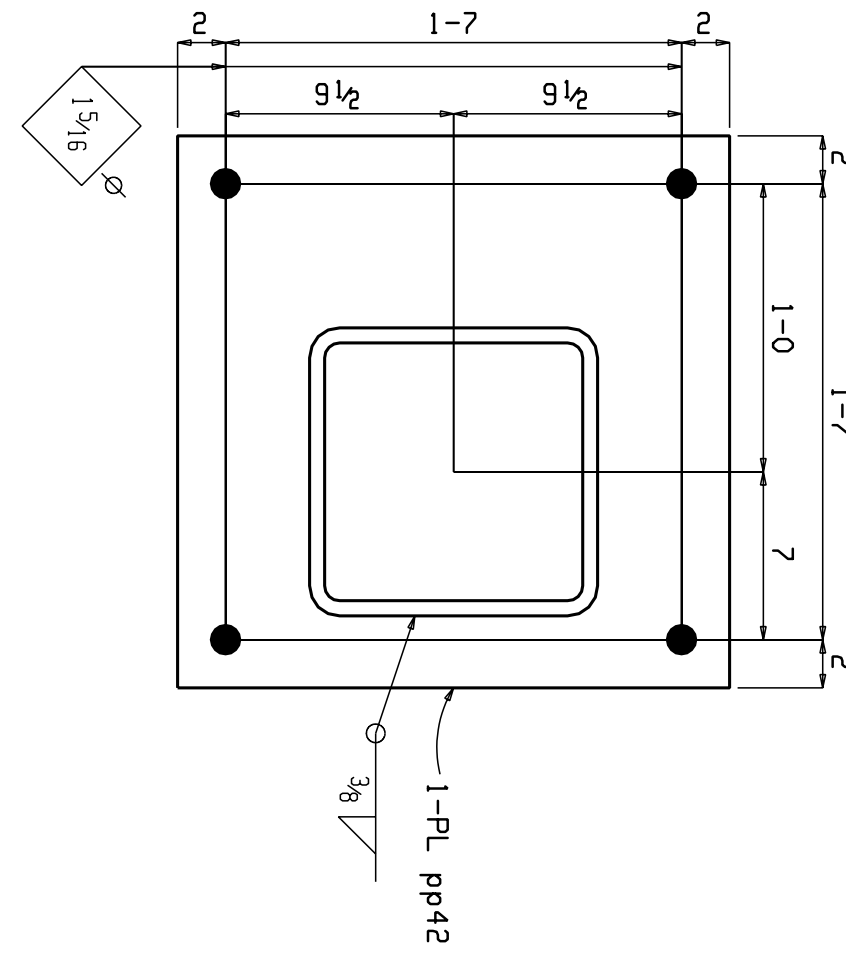
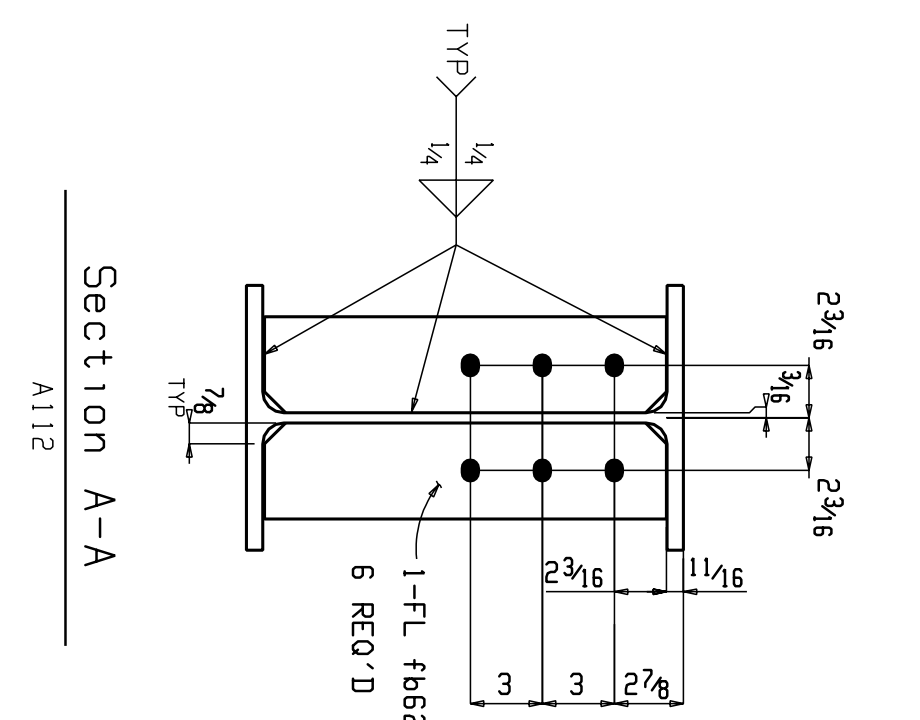
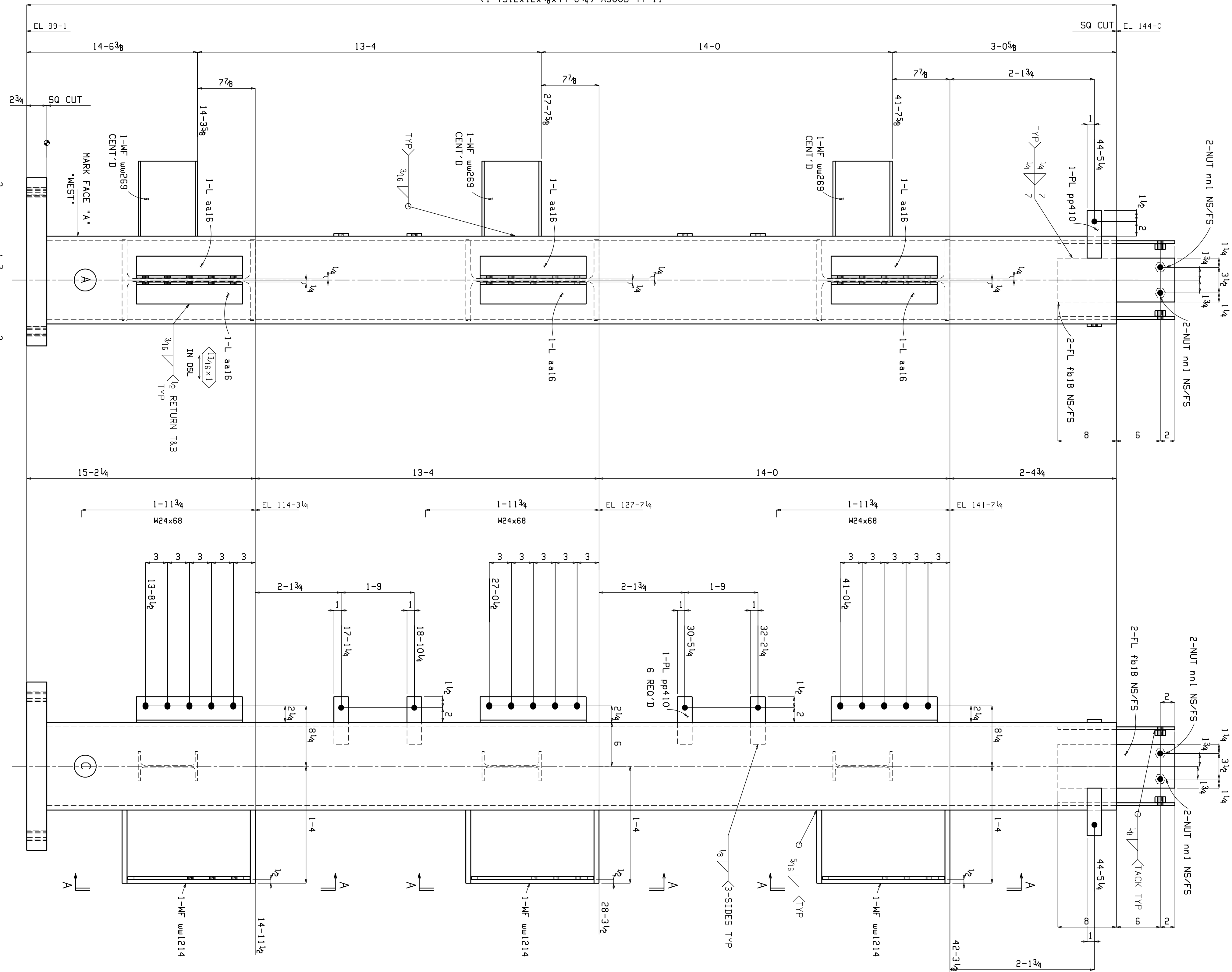


(1-TS12x12x5/8x44-8 1/4) A500B 44-11



ONE COLUMN A112

(V-9)



Section A-A  
A112

BILL OF MATERIAL

Piece Mark	Quantity	Description	Length	Steel Grade	Remarks	Sequence Numbers	Sequence Quantity
A112	ONE	COLUMN				1	1
ts518	1	TS12x12x5/8	44	8 1/4 A500B	SEC		
uu1214	3	W18x76	0	10 A992			
uu269	3	M8x15	0	10 1/4 A992			
aal16	6	L3 1/2 x 3 x 5/8	1	2 1/2 A36			
pp42	1	PL2 3/4 x 23	1	11 A36			
nn1	8	3/4 Dia NUT		A563			
Fb62	8	FL 3/8 x 4	1	4 3/4 A36			
Fb18	4	FL 3/8 x 6	1	4 A36			
pp410	5	PL 3/8 x 2	0	6 1/2 A36			
FIELD BOLTS							
	4	TC 3/4 Dia A325N	0	2	1HD MASH		

MATERIAL	ASTM A36 U.O.N.	HOLES	13/16
SURFACE PREP	SSPC-SP-3	U.O.N.	
SHOP FINISH	NO PAINT		

SUBJECT	COLUMNS - SEQ. 1
PROJECT	
LOCATION	DAYTON, OHIO
CUSTOMER	
DESIGNED BY	
DESIGN/ERECTION DWG REF	S3.1, S3.2, S3.3/E1, E2, E3
DRAWN BY	TRJ
DATE	2-20-05
CHECKED BY	JFS
DATE	2-25-05
Job No.	1574
Sheet No.	112

SHOP PLACE PIECE MARK ON LEFT HAND END OF MEMBER. ERECT MEMBER WITH PIECE MARK TO END SHOWN ON PLACEMENT PLAN		
DATE	REV	DESCRIPTION