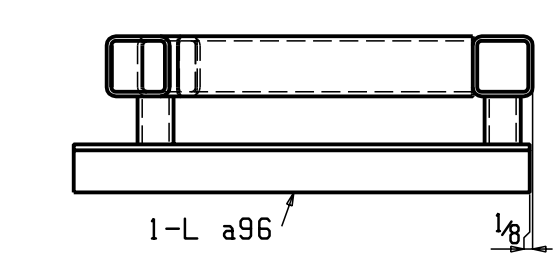


- SHOP NOTES:
1. ROUND ALL CORNERS
 2. ALL WELDS $\frac{3}{16}$ GRIND SMOOTH
 3. ALL VENT HOLES TO BE FILLED & GROUND SMOOTH AFTER GALV.
 - 4.) REPAIR ALL GALV. PRIOR TO SHIPMENT.

SHOP NOTE:
VERIFY VENT HOLE ARRANGEMENT WITH GALVANIZER.



Section A-A
A106

DATE	REV	DESCRIPTION

BILL OF MATERIAL

Mark	Quantity	Description	Length	Steel Grade	Remarks	Sequence Numbers
A106	4	SUN SHADE				1
A106	4	TS2 1/2 x 2 1/2 x 3/16	10 0	A500B		
ts102	4	TS2 1/2 x 2 1/2 x 3/16	10 4 1/16	A500B	ROLLED	
ts100	4	TS2 1/2 x 2 1/2 x 3/16	4 0	A500B		
ts99	4	TS2 1/2 x 2 1/2 x 3/16	2 11 1/8	A500B		
ts111	4	TS2 1/2 x 2 1/2 x 3/16	2 4 1/16	A500B		
ts103	4	TS2 1/2 x 2 1/2 x 3/16	1 6 3/16	A500B		
ts104	4	TS2 1/2 x 2 1/2 x 3/16	1 2 1/8	A500B		
ts101	4	TS2 1/2 x 2 1/2 x 3/16	1 0	A500B		
ts105	16	TS1 1/2 x 1 1/2 x 3/16	0 2	A500B		
a97	4	L2 1/2 x 2 x 1/4	3 10	A36		
a96	4	L2 1/2 x 2 x 1/4	2 6	A36		
p132	4	PL 3/16 x 2 1/2	0 2 1/2	A36		

MATERIAL ASTM A36 U.O.N. HOLES $\frac{13}{16}$ U.O.N. $\frac{13}{16}$
 WELDING ELECTRODE: E70XX
 SURFACE PREP SSPC-SP2
 SHOP FINISH GALVANIZED THEN PAINT PRIMER 2 MILS DFT MIN.

SUBJECT		SUN SHADES	
PROJECT			
LOCATION		PLATTE CITY, MD	
CUSTOMER			
DESIGNED BY			
DESIGN/ERECTION DWG REF		A9.5/E18	
DRAWN BY	DATE	CHECKED BY	DATE
TRJ	12-5-04	JFS	6-15-04
Sheet No. 106		Sale No. 0363	