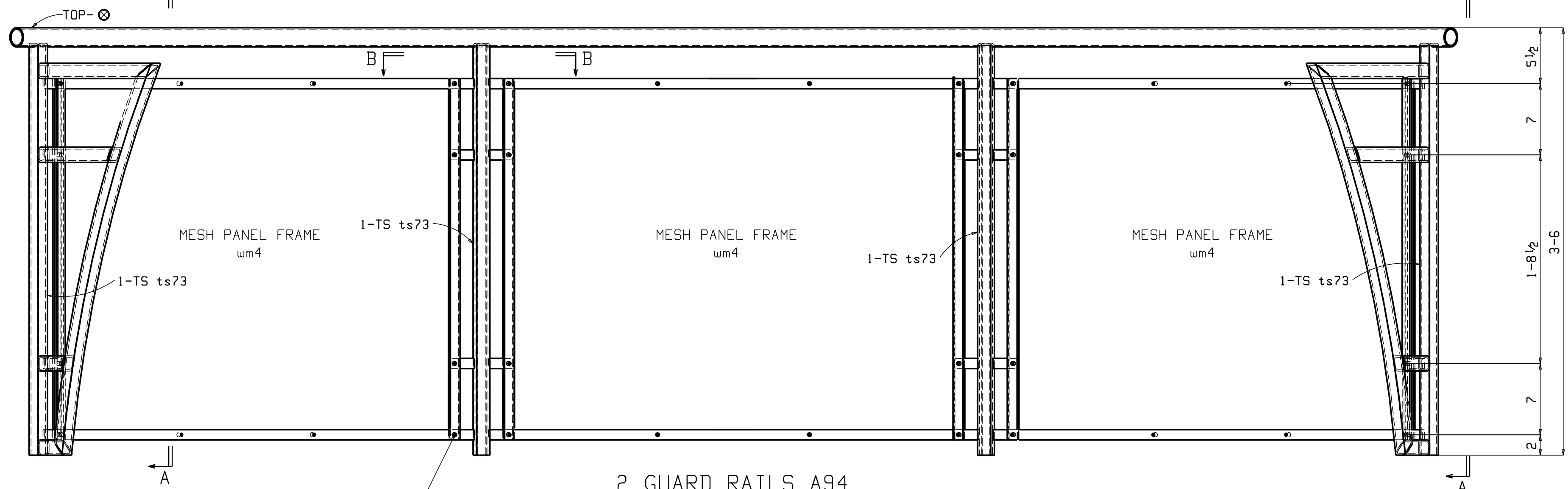


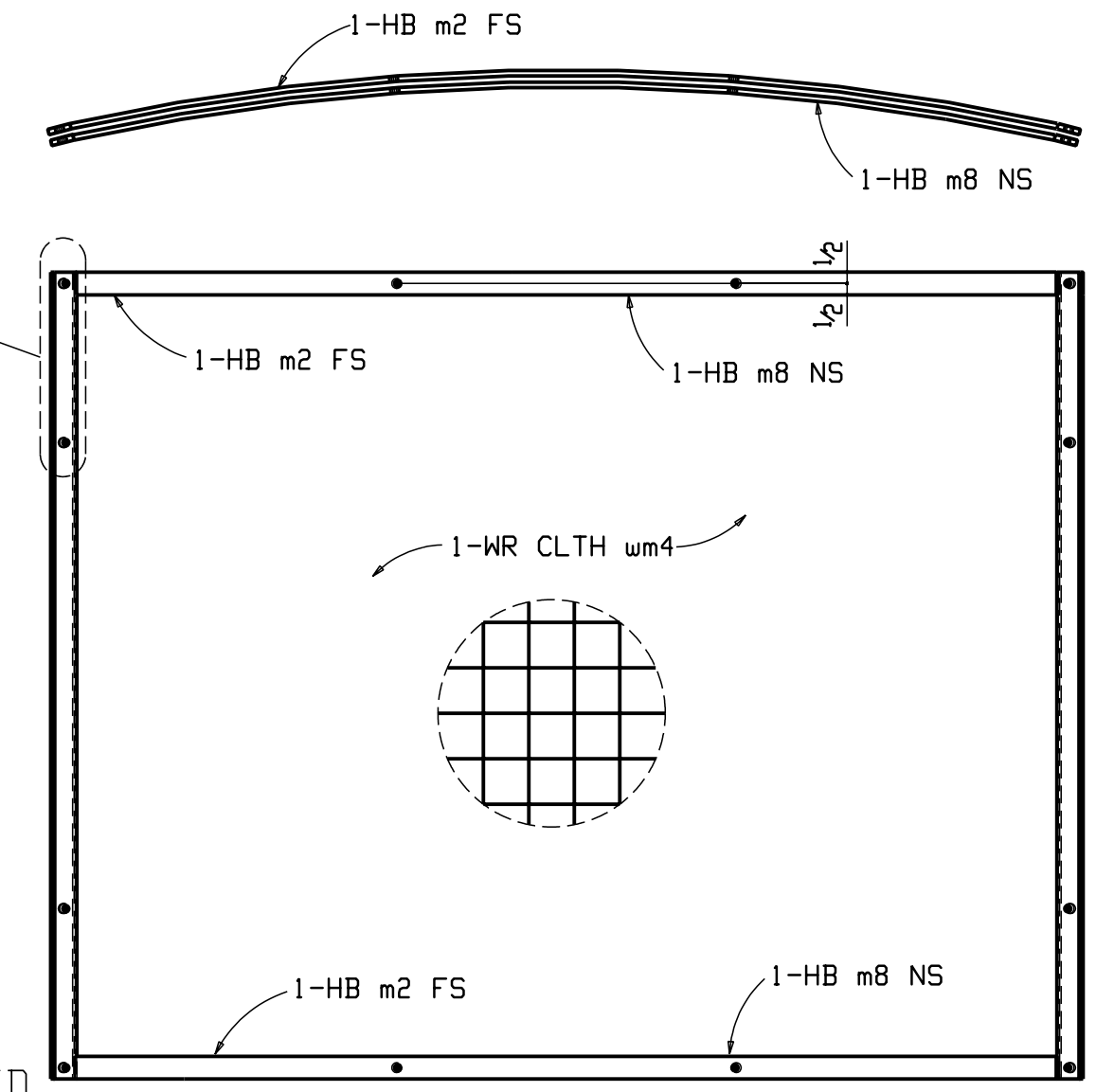
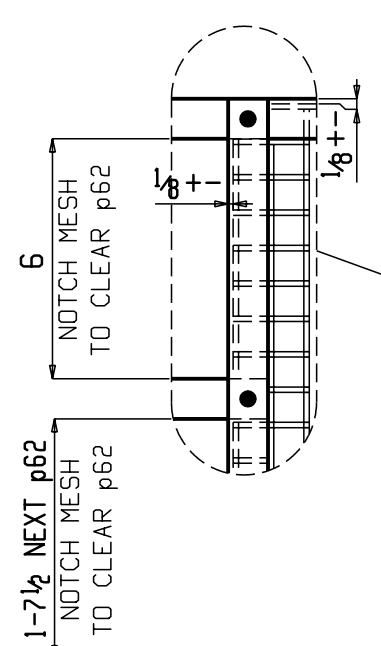
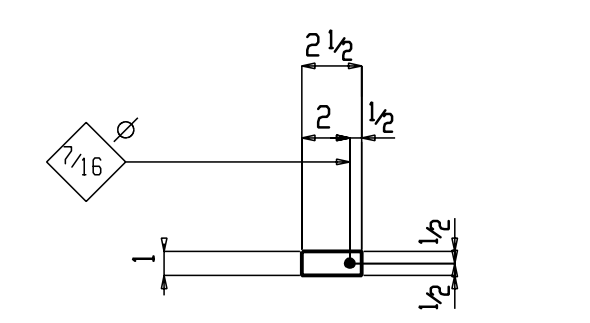
TYP Section A-A

BILL OF MATERIAL						
Mark	Quantity	Description	Length	Steel Grade	Remarks	Sequence Numbers
A94	2	GUARD RAIL				1
A94	2	PIPE 1 1/2 STD	13	1 3/16 A53		
ts77	4	TS1 1/2 X 1 1/2 X 3/16	3	9/16 A500B		
ts73	8	TS1 1/2 X 1 1/2 X 3/16	3	4 1/2 A500B		
ts76	4	TS1 1/2 X 1 1/2 X 3/16	1	4 1/2 A500B		
ts74	4	TS1 1/2 X 1 1/2 X 3/16	0	10 3/8 A500B		
ts79	4	TS1 1/2 X 1 1/2 X 3/16	0	3 3/4 A500B		
ts75	4	TS1 1/2 X 1 1/2 X 3/16	0	3 1/2 A500B		
p62	48	PL 1/4 X 1	0	2 1/2 A36		
m2	12	PL 1/4 X 1	3	7 1/16 A36	GALV	
m8	12	PL 1/4 X 1	3	7 3/16 A36	GALV	
p64	24	PL 1/4 X 1	2	11 1/2 A36	GALV	
b1	72	3/8 ALL THREAD ROD	0	1 1/2	GALV	
b2	144	3/8 ACORN NUT	0		GALV	
um4	6	3/8 X 3/4 X .135 X 35 1/4	3	9 1/16	GALV INTERCRIMP	
					WOVEN WIRE CLOTH	

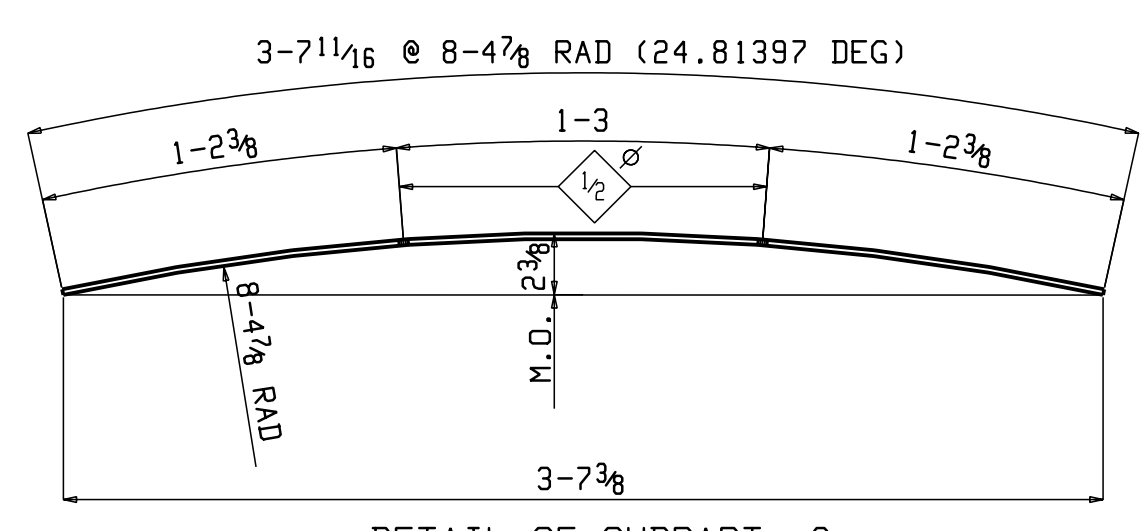
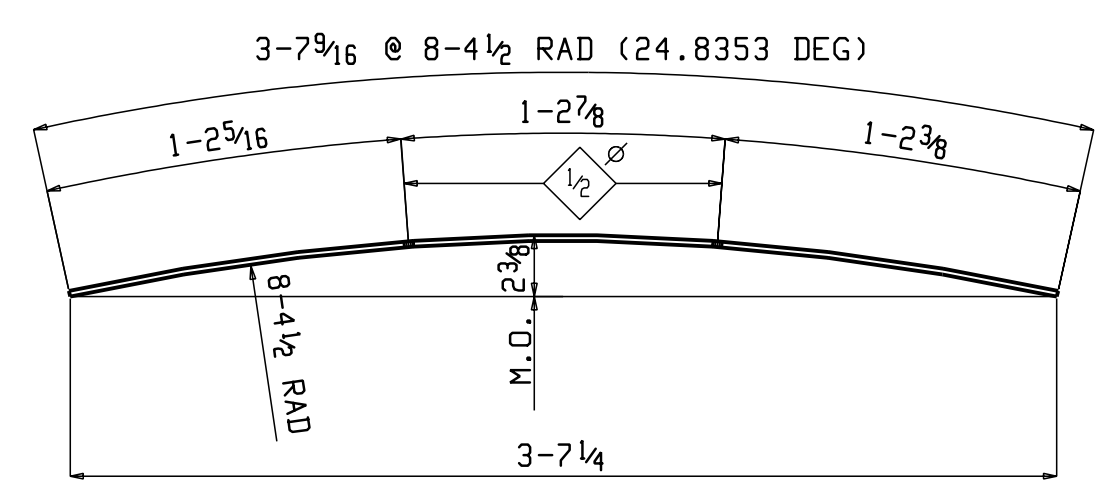
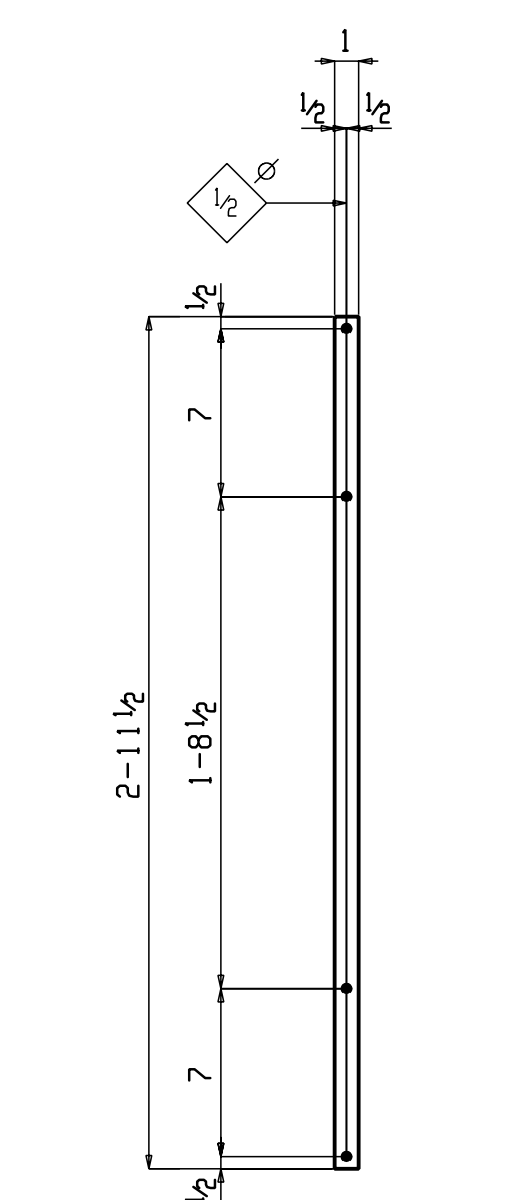
- SHOP NOTES:
1. ROUND ALL CORNERS
  2. ALL WELDS 3/16 GRIND SMOOTH
  3. ALL ITEMS MARKED AS GALV IN THE BILL OF MATERIAL ARE NOT TO BE PAINTED



ASSEMBLE WITH ALLTHREAD ROD (b1) TO PASS THROUGH CLOSED SQUARE IN WIRE CLOTH AND ACORN NUTS(b2) EACH SIDE TYP



6 MESH PANEL FRAMES  
 BRIGHT GALVANIZE (NO PAINT)



NOTE: WIRE CLOTH TO BE WELDED TO ONE SIDE OF FRAME PRIOR TO RECEIVING FINISH

DATE	REV	DESCRIPTION
	△	
	△	
	△	

MATERIAL ASTM A36 U.O.N.	HOLES 13/16
WELDING ELECTRODE: E70XX	U.O.N.
SURFACE PREP SSPC-SP3	
SHOP FINISH PRIMER 2 MILS DFT MIN. UNLESS OTHERWISE NOTED	
SUBJECT HAND/GUARD RAIL	
PROJECT	
LOCATION PLATTE CITY, MD	
CUSTOMER	
DESIGNED BY	
DESIGN/ERECTION DWG REF A9.6, A4.3, A2.4/E11	
DRAWN BY TRJ	DATE 2-17-04
CHECKED BY JFS	DATE 6-15-04
Sheet No. 94	Sale No. 0363